

Leaflet

Simply Living Community Garden Newsletter

Contacts

Project Worker:

Janet Hoare
ph 9314 1010
email: hoareaj@bigpond.com

Minister:

Peter Greenwood
ph 0438 883 659
email:
peter.greenwood@
southportuniting.org.au

Web:

www.southportuniting.org.au/

Diary Dates

"Think local, Act local" Forum

Wednesday 20th August
7.30—9.00pm
Port Melbourne Uniting
Church

Spud Night

Saturday 6th September
6.30—9.00pm
Celebrating International
Year of the Potato
Port Melbourne Uniting
Church

Planning for the Garden

The Community Grant from the City of Port Phillip has been received and planning the final design of the garden beds is underway.

Six people came along to the first Garden Working Group meeting on July 17th. Ideas for the garden design and types of plants were discussed.

These include:

- Garden beds in a radial design around the curve of the circular pathway
- A lower bed (0.4m high) for easy access by children of kindergarten age
- Separating the street and garden with a low hedge (lavender or rosemary)
- Compost bays placed on the eastern side of the garden so easily accessible; screen with a trellis and passionfruit vine
- Grow mainly edible plants (herbs, vegetables) but include some flowers as companion plants and/or attract insects for pollination (and some sunflowers in the children's garden)
- Plant some fruit trees around the garden, especially a lemon tree
- Grow vegetables which produce lots to pick, eg beans, tomatoes, zucchinis, salad greens
- In view of water restrictions include a simple watering system (the Eco Centre has an ingenious system using recycled vinegar drums which could be copied)
- Vegetables grown over summer will need to be those which use the least amount of water.

Six people came along on 14th August to peg out the beds and finalise the design and measurements. The final plan and measurements have been drawn up by Wendy van Dort from the Port Phillip Eco Centre (see next page). The shaded areas on the plan are seats. The compost bays are 0.8 m high.

Tank installation

A small (2500 l) tank has been installed at the back of the church hall. This will provide some top up water for the garden (providing we get some rain to fill the tank).

2008 Winter Forums

Everyone is invited to come and share in the 2008 winter forums. We hope you can spare one night away from the Olympic Games to come to the first forum. The Spud Night should be a lot of fun. Both events will be held in the Port Melbourne Uniting Church.

Think Local, Act Local

Wednesday 20th August
7.30—9.00 pm

Local community members share their experiences of energy efficient living, urban food gardens and more.

Spud Night

Saturday 6th September
6.30—9.00pm

A celebration of the United Nations' International Year of the Potato with potato-based food, family fun and games with the humble spud.

PPUFFN

The Port Phillip Urban Fresh Food Network (PPUFFN) is made up of groups and individuals who have an interest in gardens and providing fresh food within the City of Port Phillip. These include community gardens, organisations which provide food relief and meals, health care providers and council officers. Port Melbourne Uniting Church is part of this network and other members have been very helpful in sharing ideas and support for the development of the Simply Living Garden.

PPUFFN forums are held once a quarter and are coordinated by the Port Phillip Eco Centre.

**South Port
Uniting Church**

**Port Melbourne
congregation**



The Simply Living Community Garden is being built with support from the City of Port Phillip Community Grants Program

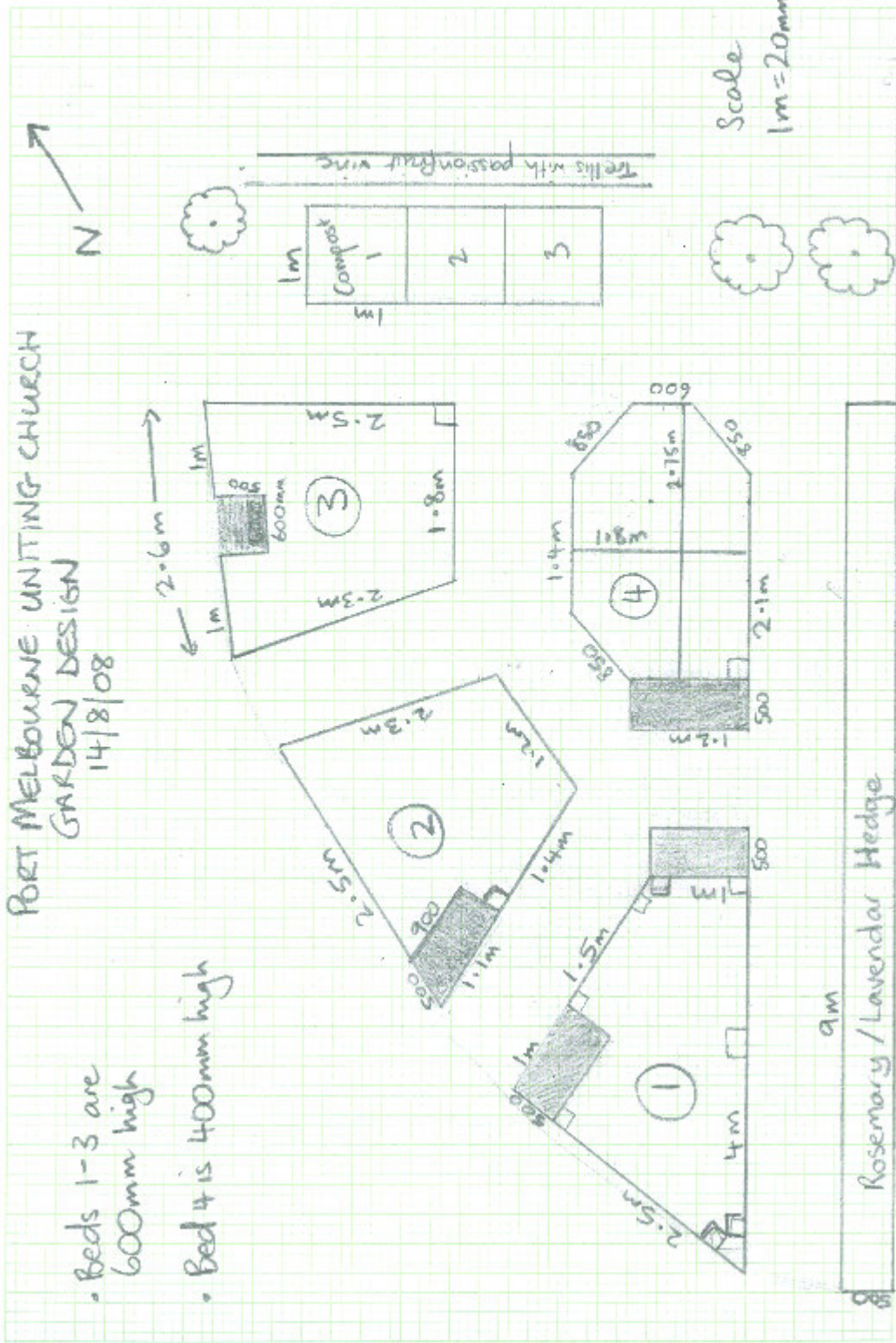


PROUD SPONSOR

PORT MELBOURNE UNITING CHURCH
GARDEN DESIGN
14/8/08

• Beds 1-3 are
600mm high

• Bed 4 is 400mm high



Scale
1m = 20mm